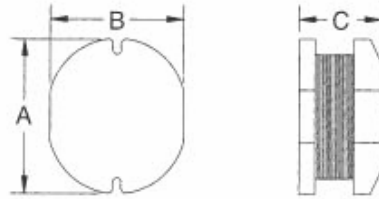
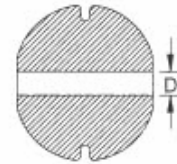


FEATURE

- Excellent solderability and high heat resistance.
- Excellent terminal strength construction.
- Packed in embossed carrier tape and can be use by automatic mounting machine.

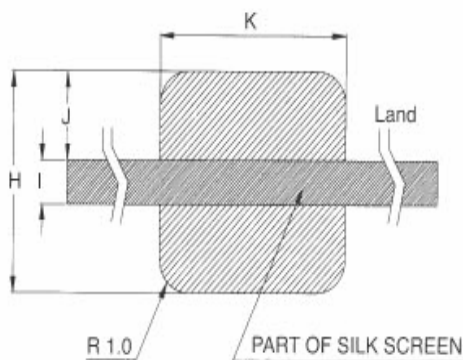
SHAPES & DIMENSION

DIMENSION

TERMINAL SHAPE

APPLICATION

- Notebook PC
- VTR
- LCD TE
- MP3-player
- Digital camera
- G.P.S
- Portable CDR-W
- PDA(desktop)

Dimension in mm

TYPE	A	B	C	D TYP.
GSCD 3015 (1 μH~100μH)	3.3±0.3	3.0±0.3	1.5±0.3	1.0
GSCD 3021 (1μH~9000μH)	3.3±0.3	3.3±0.3	2.1±0.3	1.0
GSCD 32 (1μH~470μH)	3.0±0.3	2.8±0.3	2.5±0.3	0.8
GSCD 43 (1μH~470μH)	4.5±0.3	4.0±0.3	3.2±0.3	1.3
GSCD 52 (1μH~1000μH)	5.8±0.3	5.2±0.3	2.5±0.3	1.3
GSCD 54 (1μH~100μH)	5.8±0.3	5.2±0.3	4.5±0.3	1.3
GSCD 73 (10μH~470μH)	7.8±0.3	7.0±0.3	3.5±0.3	2.1
GSCD 75 (10μH~470μH)	7.8±0.3	7.0±0.3	5.0±0.3	2.1
GSCD 104 (10μH~560μH)	10.0±0.3	9.0±0.3	4.0±0.3	2.1
GSCD 105 (10μH~820μH)	10.0±0.4	9.0±0.4	5.4±0.3	2.1
GSCD 106 (10μH~1200μH)	11.0Max.	10.0Max.	11.0Max.	2.1

RECOMMENDED LAND PATTERNS FOR SMD


UNIT:mm

TYPE	H	I	J	K
GSCD 3015	3.6	1.2	1.2	3.5
GSCD 3021	3.6	1.2	1.2	3.5
GSCD 32	3.6	1.2	1.2	3.2
GSCD 43	5.0	1.5	1.5	4.5
GSCD 52	6.0	1.7	2.15	5.5
GSCD 54	6.0	1.7	2.15	5.5
GSCD 73	8.0	2.0	3.0	7.5
GSCD 75	8.0	2.0	3.0	7.5
GSCD 104	10.0	2.5	3.75	9.5
GSCD 105	10.0	2.5	3.75	9.5
GSCD 106	10.0	2.5	3.75	9.5